



GMT MONTHLY MEMBERSHIP PROGRESS REPORT

Results as of: 5/31/2020

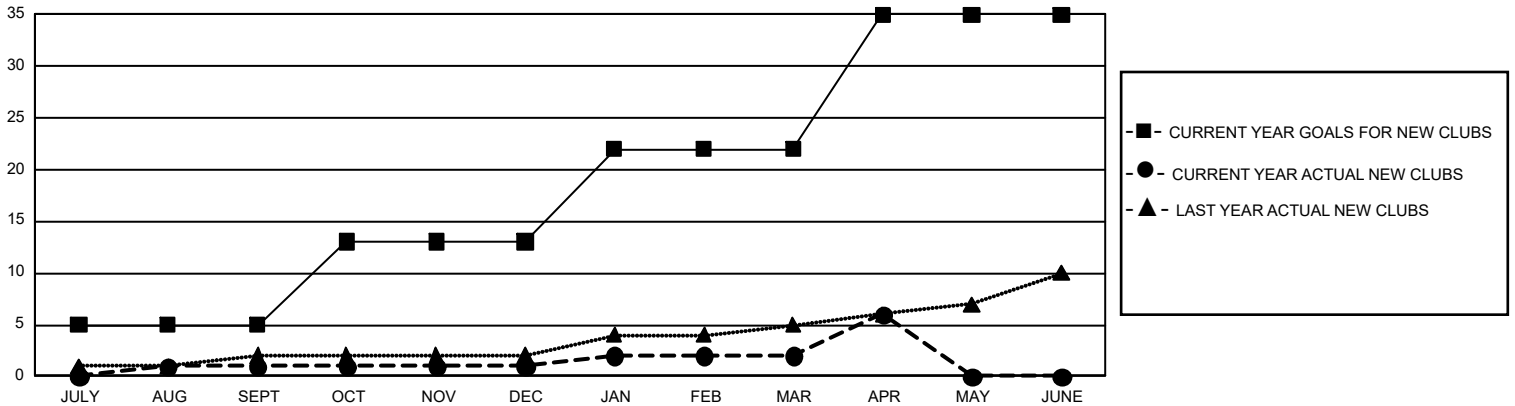
GMT Constitutional Area 1, Group D

GMT: OPEN

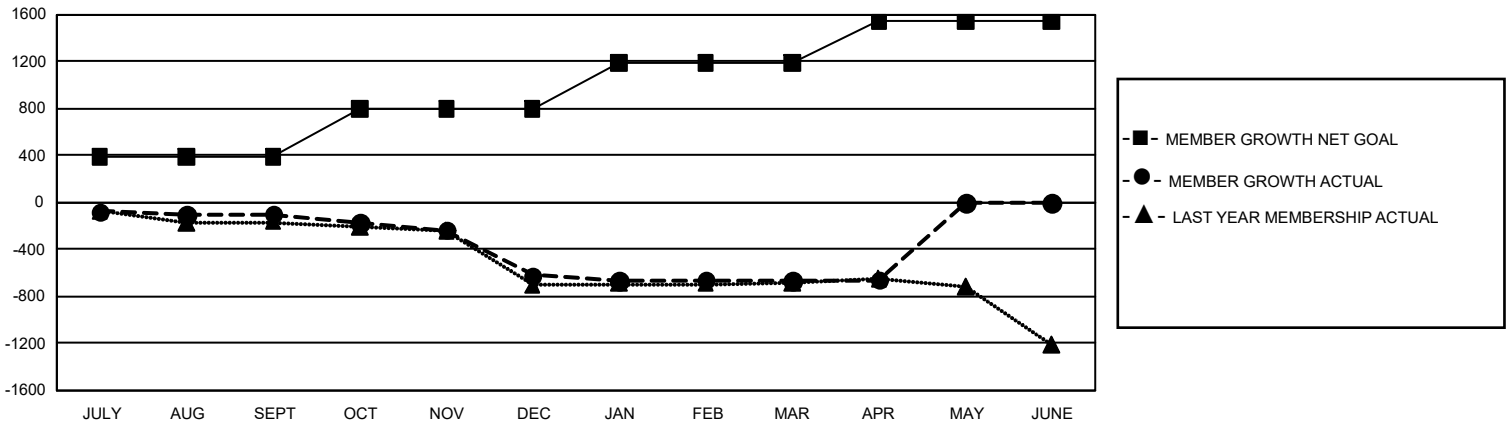
REPORT DOES NOT INCLUDE CLUBS IN UNDISTRICTED AREAS.

Clubs				Members			
RESULTS FOR 2019-2020				RESULTS FOR 2019-2020			
QUARTER	NEW CLUB GOAL	NEW CLUBS	DROPPED CLUBS	QUARTER	MEMBER GROWTH NET GOAL	MEMBER GROWTH ACTUAL	DROPPED MEMBERS ACTUAL (including transfers)
JULY/AUG/SEPT	15	1	7	JULY/AUG/SEPT	1,170	567	604
OCT/NOV/DEC	24	0	11	OCT/NOV/DEC	1,218	468	927
JAN/FEB/MAR	27	1	4	JAN/FEB/MAR	1,185	640	621
APR/MAY/JUNE	39	4	0	APR/MAY/JUNE	1,062	130	115

GOALS AND ACTUAL NEW CLUBS CUMULATIVE



GOALS AND ACTUAL MEMBERS CUMULATIVE



DROPPED CLUBS: 22	536 CLUBS OF 1,113 ADDED 1 OR MORE NEW MEMBERS	GENDER DISTRIBUTION MALE 19,634 (69.71%) FEMALE 8,530 (30.29%)
DROPPED MEMBERS DECEASED 443 CLUB CANCELLED 126 OTHER 1,698 <hr/> TOTAL 2,267	CLICK HERE FOR CUMULATIVE MEMBERSHIP DATA	TOTAL FAMILY UNIT MEMBERS 5,685 FAMILY MEMBERS PAYING HALF DUES 2,915